



[2017 ASIA WOMEN'S CHAMPIONSHIP]

Match Team Statistics

Referees : SHIMAJIRI / OTA

2017.03.17 16:30 SUWON

MVP :

CHINA 24 ^{13 : 21} 43 KOREA
11 : 22

CHINA

Players		Shots								Offence			Deffence		RB	Punishments				Running
No.	Name	G/S	%	6m	Wing	9m	7m	FB	BT	AS	TF	BD	BS	ST		YC	2Min	RC	DR	
1	YAN	0 / 0								1									00:00	
3	HAIXIA	2 / 3	66.7%	1 / 1	1 / 1			0 / 1			1			1					00:00	
4	JIAQIN	3 / 6	50.0%	3 / 5		0 / 1				5	6	1							00:00	
10	XIUXIU	4 / 6	66.7%	2 / 2		1 / 3		1 / 1				1	1		1	1			00:00	
11	YUANYUAN	0 / 1	0.0%					0 / 1							1				00:00	
13	WEN	2 / 3	66.7%		0 / 1	1 / 1		1 / 1				1							00:00	
15	MENGYING	3 / 7	42.9%	1 / 2		2 / 5				1	2	1			1				00:00	
16	XIAOHUA	0 / 0																	00:00	
17	LIJIE	1 / 2	50.0%	1 / 1		0 / 1										2			00:00	
21	YAO	1 / 2	50.0%	1 / 1		0 / 1				1	1			1					00:00	
27	TING	0 / 3	0.0%	0 / 1		0 / 2													00:00	
28	RU	6 / 7	85.7%	4 / 5				1 / 1	1 / 1	1	3		2		1	1			00:00	
29	JIAO	0 / 0									1		1						00:00	
33	MENGQING	1 / 1	100.0%				1 / 1					2		1					00:00	
41	JIJUAN	1 / 3	33.3%					1 / 3			1								00:00	
69	XIAOLING	0 / 2	0.0%	0 / 2							2			1	1				00:00	
Totals		24 / 46	52.2%	13 / 20	1 / 2	4 / 14	1 / 1	4 / 8	1 / 1	9	17	6	4	4	2	4	3	0	0	

Goalkeepers		Total Shots		6m Shots		Wing Shots		9m Shots		7m Shots		Fast Breaks		Breakthroughs	
No.	Name	S/S	%	S/S	%	S/S	%	S/S	%	S/S	%	S/S	%	S/S	%
1	YAN	6 / 33	18.2 %	3 / 16	18.8 %	1 / 7	14.3 %	1 / 1	100.0 %	0 / 1	0.0 %	1 / 7	14.3 %	0 / 1	0.0 %
16	XIAOHUA	2 / 18	11.1 %	2 / 10	20.0 %	0 / 0	0.0 %	0 / 1	0.0 %	0 / 1	0.0 %	0 / 5	0.0 %	0 / 1	0.0 %
Totals		8 / 51	15.7%	5 / 26	19.2%	1 / 7	14.3%	1 / 2	50.0%	0 / 2	0.0%	1 / 12	8.3%	0 / 2	0.0%

Team Shots	Goals	Saves	Missed	Post	Blocked	Total	%
6m Shots	13	7	0	0	0	20	65.0 %
Wing Shots	1	1	0	0	0	2	50.0 %
9m Shots	4	8	0	2	0	14	28.6 %
7m Shots	1	0	0	0	0	1	100.0 %
Fast Breaks	4	3	0	1	0	8	50.0 %
Breakthroughs	1	0	0	0	0	1	100.0 %
Totals	24	19	0	3	0	46	52.2 %



[2017 ASIA WOMEN'S CHAMPIONSHIP]

Shot Distribution

Referees : SHIMAJIRI / OTA

2017.03.17 16:30 SUWON

MVP :

CHINA 24 13 : 21 43 KOREA 11 : 22

CHINA

Players

Goals / Shots

3 HAIXIA		
0 / 0	0 / 0	0 / 0
0 / 1	0 / 0	0 / 0
1 / 1	1 / 1	0 / 0

4 JIAQIN		
0 / 0	0 / 0	0 / 0
0 / 0	0 / 1	1 / 1
1 / 2	1 / 1	0 / 1

Blocked: 1

10 XIUXIU		
1 / 1	0 / 0	0 / 0
0 / 0	1 / 2	0 / 0
2 / 2	0 / 0	0 / 0

Post: 1 Blocked: 1

11 YUANYUAN		
0 / 0	0 / 1	0 / 0
0 / 0	0 / 0	0 / 0
0 / 0	0 / 0	0 / 0

13 WEN		
0 / 1	0 / 0	0 / 0
1 / 1	0 / 0	0 / 0
0 / 0	1 / 1	0 / 0

Blocked: 1

15 MENGYING		
0 / 0	0 / 0	0 / 0
0 / 2	0 / 1	1 / 1
1 / 1	0 / 0	1 / 2

Blocked: 1

17 LIJIE		
0 / 1	0 / 0	0 / 0
0 / 0	0 / 0	0 / 0
1 / 1	0 / 0	0 / 0

21 YAO		
0 / 0	0 / 0	0 / 0
0 / 0	0 / 0	0 / 0
0 / 0	0 / 0	1 / 1

Post: 1

27 TING		
0 / 0	0 / 0	0 / 1
0 / 0	0 / 1	0 / 1
0 / 0	0 / 0	0 / 0

28 RU		
1 / 1	0 / 0	0 / 0
0 / 0	0 / 0	1 / 1
2 / 3	1 / 1	1 / 1

29 JIAO		
0 / 0	0 / 0	0 / 0
0 / 0	0 / 0	0 / 0
0 / 0	0 / 0	0 / 0

33 MENGQING		
0 / 0	0 / 0	1 / 1
0 / 0	0 / 0	0 / 0
0 / 0	0 / 0	0 / 0

Blocked: 2

41 JIJUAN		
0 / 0	0 / 0	0 / 0
0 / 0	0 / 0	1 / 2
0 / 0	0 / 0	0 / 0

Post: 1

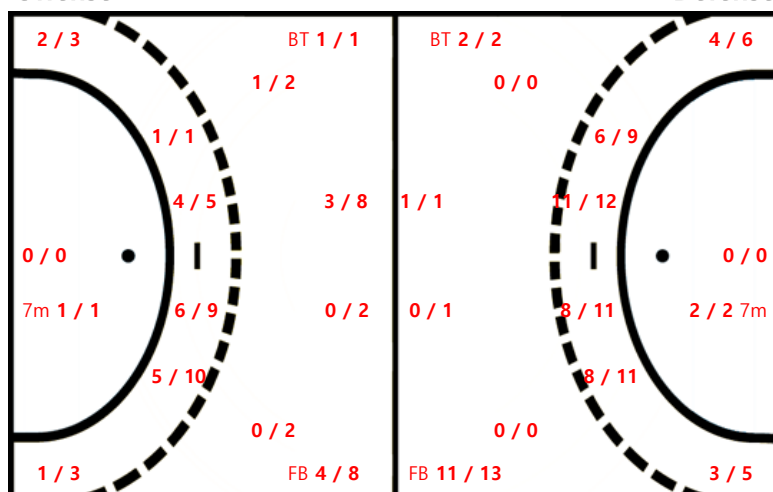
69 XIAOLING		
0 / 1	0 / 0	0 / 0
0 / 0	0 / 0	0 / 0
0 / 0	0 / 1	0 / 0

Team Goals / Shots

Team		
2 / 5	0 / 1	1 / 2
1 / 4	1 / 5	4 / 6
8 / 10	4 / 5	3 / 5

Post: 3 Blocked: 6

Offense



Defense

Goalkeepers Goals / Shots

1 YAN		
0 / 1	0 / 1	0 / 3
1 / 3	0 / 0	2 / 2
1 / 7	2 / 5	0 / 11

16 XIAOHUA		
0 / 0	0 / 0	0 / 1
0 / 3	0 / 0	1 / 1
0 / 7	0 / 0	1 / 6

2Min	2 Minute Suspensions	AS	Assists	BS	Block Shots	BT	Breakthroughs	RB	Rebound
DR	Disqualification with report	RC	Red cards	FB	Fast Breaks	G/S	Goals/Shots	BD	Blocked
S/S	Saves/Shots	YC	Yellow Cards	ST	Steals	TF	Technical Faults	%	Efficiency



[2017 ASIA WOMEN'S CHAMPIONSHIP]

Play by Play

Referees : SHIMAJIRI / OTA

2017.03.17 16:30 SUWON

MVP :

CHINA 24 13 : 21 11 : 22 43 KOREA

CHINA

1 YAN
13 WEN
27 TING
69 XIAOLING

3 HAIXIA
15 MENGYING
28 RU

4 JIAQIN
16 XIAOHUA
29 JIAO

10 XIUXIU
17 LUJIE
33 MENGQING

11 YUANYUAN
21 YAO
41 JIJUAN

KOREA

2 SONG JIYOUNG
13 RYUEUNHEE
18 HANMISUEL
27 NAM YEONGSIN

5 JUNG YURA
14 PARK JUNHEE
19 JUNGJIHAE

10 WON SEONPIL
15 CHOISUMIN
22 SHIN EUNJOO

11 SIMHAEIN
16 PARK SAEYOUNG
23 LEE MIGYEONG

12 JUHUI
17 KIM JINYI
24 GWONHANNA

1st Half

Match Time	CHINA	Score	Lead	KOREA
00:40	17 LUJIE right-wing 6m SHOT GOAL	1 : 0	1	12 JUHUI Goalkeeper
01:14	1 YAN Goalkeeper	1 : 1	0	27 NAM YEONGSIN left-center 6m SHOT GOAL Assist: 11 SIMHAEIN
01:43	3 HAIXIA Technical Fault			
01:51	1 YAN Goalkeeper Saved			5 JUNG YURA right-center 6m FastBreak
01:53	69 XIAOLING Rebound			
02:10	4 JIAQIN left-wing 6m SHOT GOAL	2 : 1	1	12 JUHUI Goalkeeper
02:41	17 LUJIE 2Min			
02:41				13 RYUEUNHEE Technical Fault
03:12	4 JIAQIN Technical Fault			
03:33	1 YAN Goalkeeper	2 : 2	0	15 CHOISUMIN left-wing SHOT GOAL Assist: 11 SIMHAEIN
03:56				15 CHOISUMIN Steal
04:01	1 YAN Goalkeeper	2 : 3	-1	15 CHOISUMIN left-center 6m FastBreak GOAL
04:23	69 XIAOLING left-wing 6m SHOT			12 JUHUI Goalkeeper Saved
04:29				24 GWONHANNA Rebound
04:32				13 RYUEUNHEE left-center 6m FastBreak Missed
04:38	69 XIAOLING Technical Fault			
05:21	11 YUANYUAN Yellow Card			
05:37	69 XIAOLING Steal			
05:43	3 HAIXIA left-center 6m FastBreak			12 JUHUI Goalkeeper Saved
06:27	17 LUJIE right-wing 9m SHOT			12 JUHUI Goalkeeper Saved
06:29				13 RYUEUNHEE Rebound
06:31				13 RYUEUNHEE Technical Fault
06:52	69 XIAOLING left-wing 6m SHOT			12 JUHUI Goalkeeper Saved
07:20	15 MENGYING Yellow Card			
07:33	1 YAN Goalkeeper	2 : 4	-2	11 SIMHAEIN left-wing 6m SHOT GOAL
08:11	28 RU Technical Fault			
08:43				11 SIMHAEIN Technical Fault
08:52	13 WEN right-wing FastBreak GOAL Assist: 1 YAN	3 : 4	-1	12 JUHUI Goalkeeper
09:00	1 YAN Goalkeeper Saved			15 CHOISUMIN left-wing SHOT
09:25	15 MENGYING right-center 9m SHOT GOAL	4 : 4	0	12 JUHUI Goalkeeper
10:02	1 YAN Goalkeeper	4 : 5	-1	5 JUNG YURA right-wing SHOT GOAL Assist: 24 GWONHANNA

Match Time	CHINA	Score	Lead	KOREA
10:41	15 MENGYING right-center 6m SHOT			12 JUHUI Goalkeeper Saved
10:49	28 RU Technical Fault			
11:21	1 YAN Goalkeeper	4 : 6	-2	24 GWONHANNA right-center 6m SHOT GOAL
11:46	15 MENGYING Technical Fault			
12:30	16 XIAOHUA Goalkeeper	4 : 7	-3	27 NAM YEONGSIN right-wing 6m SHOT GOAL Assist: 13 RYUEUNHEE
13:03	13 WEN Blocked			11 SIMHAEIN BlockShot
13:16				13 RYUEUNHEE Steal
13:22	16 XIAOHUA Goalkeeper	4 : 8	-4	5 JUNG YURA right-wing 6m FastBreak GOAL
13:31	13 WEN right-wing SHOT			12 JUHUI Goalkeeper Saved
13:34				11 SIMHAEIN Rebound
14:06	28 RU Yellow Card			
14:22	16 XIAOHUA Goalkeeper	4 : 9	-5	13 RYUEUNHEE 7m caused SHOT GOAL Assist: 24 GWONHANNA
14:47	15 MENGYING right-center 6m SHOT GOAL	5 : 9	-4	12 JUHUI Goalkeeper
14:51				17 KIM JINYI Yellow Card
15:23				11 SIMHAEIN Technical Fault
15:34	28 RU right-center 6m FastBreak GOAL Assist: 4 JIAQIN	6 : 9	-3	12 JUHUI Goalkeeper
15:56	16 XIAOHUA Goalkeeper	6 : 10	-4	27 NAM YEONGSIN right-wing 6m SHOT GOAL
16:22	3 HAIXIA right-wing SHOT GOAL	7 : 10	-3	12 JUHUI Goalkeeper
16:52	16 XIAOHUA Goalkeeper	7 : 11	-4	13 RYUEUNHEE right-center 6m SHOT GOAL
17:11	21 YAO Technical Fault			
17:50	16 XIAOHUA Goalkeeper	7 : 12	-5	23 LEE MIGYEONG left-wing 6m BreakThrough GOAL
18:13	28 RU left-wing 6m BreakThrough GOAL	8 : 12	-4	12 JUHUI Goalkeeper
18:24	16 XIAOHUA Goalkeeper	8 : 13	-5	23 LEE MIGYEONG left-center 6m FastBreak GOAL
18:51	4 JIAQIN left-center 6m SHOT GOAL	9 : 13	-4	12 JUHUI Goalkeeper
19:19	17 LUJIE 2Min			
19:32	1 YAN Goalkeeper	9 : 14	-5	23 LEE MIGYEONG right-center 6m SHOT GOAL
20:27	15 MENGYING Blocked			15 CHOISUMIN BlockShot
20:32	4 JIAQIN Technical Fault			
20:44				5 JUNG YURA right-wing SHOT Post
21:10	4 JIAQIN Technical Fault			
21:17	1 YAN Goalkeeper	9 : 15	-6	15 CHOISUMIN right-center 6m FastBreak GOAL Assist: 13 RYUEUNHEE
21:29				11 SIMHAEIN Steal
21:54	1 YAN Goalkeeper	9 : 16	-7	13 RYUEUNHEE right-wing 6m SHOT GOAL
22:34	4 JIAQIN left-wing 9m SHOT			12 JUHUI Goalkeeper Saved
22:39	21 YAO Steal			
23:04	15 MENGYING right-center 9m SHOT			12 JUHUI Goalkeeper Saved
23:56				13 RYUEUNHEE Technical Fault
24:09	15 MENGYING Technical Fault			
24:57				15 CHOISUMIN left-wing SHOT Missed
25:25	21 YAO left-wing 6m SHOT GOAL Assist: 4 JIAQIN	10 : 16	-6	12 JUHUI Goalkeeper
25:54	1 YAN Goalkeeper	10 : 17	-7	23 LEE MIGYEONG right-wing 6m SHOT GOAL
26:08	28 RU right-center 6m SHOT GOAL Assist: 21 YAO	11 : 17	-6	12 JUHUI Goalkeeper
26:15	1 YAN Goalkeeper	11 : 18	-7	5 JUNG YURA right-wing SHOT GOAL
26:27	41 JIJUAN left-wing FastBreak GOAL Assist: 4 JIAQIN	12 : 18	-6	12 JUHUI Goalkeeper
26:57	1 YAN Goalkeeper Saved			10 WON SEONPIL right-center 6m SHOT
27:24	4 JIAQIN Technical Fault			

Match Time	CHINA	Score	Lead	KOREA
27:35	1 YAN Goalkeeper	12 : 19	-7	23 LEE MIGYEONG right-center 6m FastBreak GOAL Assist: 5 JUNG YURA
28:06	15 MENGYING left-wing 9m SHOT			12 JUHUI Goalkeeper Saved
28:08	28 RU Rebound			
28:15	28 RU left-center 6m SHOT GOAL	13 : 19	-6	12 JUHUI Goalkeeper
28:53	1 YAN Goalkeeper	13 : 20	-7	15 CHOISUMIN left-wing SHOT GOAL
29:23	4 JIAQIN left-wing 6m SHOT			12 JUHUI Goalkeeper Saved
29:27				13 RYUEUNHEE Rebound
29:51	1 YAN Goalkeeper	13 : 21	-8	27 NAM YEONGSIN left-wing 6m SHOT GOAL Assist: 15 CHOISUMIN



[2017 ASIA WOMEN'S CHAMPIONSHIP]

Play by Play

Referees : SHIMAJIRI / OTA

2017.03.17 16:30 SUWON

MVP :

CHINA 24 13 : 21 11 : 22 43 KOREA

CHINA

1 YAN
13 WEN
27 TING
69 XIAOLING

3 HAIXIA
15 MENGYING
28 RU

4 JIAQIN
16 XIAOHUA
29 JIAO

10 XIUXIU
17 LIJIE
33 MENGQING

11 YUANYUAN
21 YAO
41 JIJUAN

KOREA

2 SONG JIYOUNG
13 RYUEUNHEE
18 HANMISUEL
27 NAM YEONGSIN

5 JUNG YURA
14 PARK JUNHEE
19 JUNGJIHAE

10 WON SEONPIL
15 CHOISUMIN
22 SHIN EUNJOO

11 SIMHAEIN
16 PARK SAEYOUNG
23 LEE MIGYEONG

12 JUHUI
17 KIM JINYI
24 GWONHANNA

2nd half

Match Time	CHINA	Score	Lead	KOREA
00:37	3 HAIXIA Steal			
00:48	69 XIAOLING Technical Fault			
01:49	10 XIUXIU BlockShot			13 RYUEUNHEE Blocked
02:00				5 JUNG YURA right-wing SHOT Missed
02:29				11 SIMHAEIN Steal
02:37	1 YAN Goalkeeper	13 : 22	-9	15 CHOISUMIN right-center 6m FastBreak GOAL Assist: 5 JUNG YURA
02:53	3 HAIXIA left-center 6m SHOT GOAL Assist: 28 RU	14 : 22	-8	12 JUHUI Goalkeeper
03:37				11 SIMHAEIN Technical Fault
03:47	41 JIJUAN left-wing FastBreak			12 JUHUI Goalkeeper Saved
03:57	28 RU BlockShot			11 SIMHAEIN Blocked
03:57				27 NAM YEONGSIN 2Min
04:18	41 JIJUAN Technical Fault			
04:45	1 YAN Goalkeeper	14 : 23	-9	13 RYUEUNHEE right-wing 6m SHOT GOAL
04:59	10 XIUXIU right-center 9m SHOT GOAL	15 : 23	-8	12 JUHUI Goalkeeper
05:46	1 YAN Goalkeeper Saved			24 GWONHANNA left-wing 6m SHOT
05:54	41 JIJUAN left-wing 6m FastBreak Post			
06:47	1 YAN Goalkeeper	15 : 24	-9	15 CHOISUMIN left-wing SHOT GOAL
06:58	10 XIUXIU left-center 6m SHOT GOAL	16 : 24	-8	12 JUHUI Goalkeeper
07:22	1 YAN Goalkeeper	16 : 25	-9	24 GWONHANNA right-center 6m BreakThrough GOAL
07:56	21 YAO right-center 9m SHOT Post			
08:32	1 YAN Goalkeeper	16 : 26	-10	27 NAM YEONGSIN left-center 6m SHOT GOAL Assist: 24 GWONHANNA
09:08	33 MENGQING 7m caused SHOT GOAL Assist: 15 MENGYING	17 : 26	-9	12 JUHUI Goalkeeper
09:55	10 XIUXIU Yellow Card			
09:55	10 XIUXIU 2Min			
09:59	1 YAN Goalkeeper	17 : 27	-10	23 LEE MIGYEONG 7m caused SHOT GOAL
10:46	28 RU left-center 6m SHOT			12 JUHUI Goalkeeper Saved
10:51	1 YAN Goalkeeper	17 : 28	-11	14 PARK JUNHEE right-wing FastBreak GOAL
11:14	28 RU Technical Fault			
11:34	1 YAN Goalkeeper Saved			14 PARK JUNHEE right-wing 6m SHOT
11:35				15 CHOISUMIN Rebound

Match Time	CHINA	Score	Lead	KOREA
11:37	1 YAN Goalkeeper	17 : 29	-12	15 CHOISUMIN left-wing SHOT GOAL
11:58				15 CHOISUMIN Steal
13:02	1 YAN Goalkeeper Saved			14 PARK JUNHEE right-center 9m SHOT
13:05				23 LEE MIGYEONG Steal
13:13				23 LEE MIGYEONG left-wing 6m SHOT Post
13:41	4 JIAQIN left-wing 6m SHOT GOAL	18 : 29	-11	12 JUHUI Goalkeeper
14:58	15 MENGYING right-center 9m SHOT GOAL	19 : 29	-10	12 JUHUI Goalkeeper
15:43				15 CHOISUMIN Steal
15:51	1 YAN Goalkeeper	19 : 30	-11	14 PARK JUNHEE right-center 6m SHOT GOAL
16:15	1 YAN Goalkeeper	19 : 31	-12	15 CHOISUMIN left-center 6m SHOT GOAL Assist: 19 JUNGJIHAE
16:52	10 XIUXIU Blocked			17 KIM JINYI BlockShot
16:58	1 YAN Goalkeeper	19 : 32	-13	14 PARK JUNHEE right-wing 6m SHOT GOAL Assist: 5 JUNG YURA
17:02	10 XIUXIU left-wing 6m FastBreak GOAL	20 : 32	-12	16 PARK SAEYOUNG Goalkeeper
17:27	1 YAN Goalkeeper	20 : 33	-13	5 JUNG YURA left-center 6m SHOT GOAL
17:39	4 JIAQIN Technical Fault			
17:44	1 YAN Goalkeeper	20 : 34	-14	15 CHOISUMIN left-center 6m FastBreak GOAL Assist: 14 PARK JUNHEE
18:06	28 RU left-center 6m SHOT GOAL Assist: 4 JIAQIN	21 : 34	-13	16 PARK SAEYOUNG Goalkeeper
18:38	16 XIAOHUA Goalkeeper	21 : 35	-14	19 JUNGJIHAE left-center 6m SHOT GOAL
18:49	15 MENGYING right-center 9m SHOT			16 PARK SAEYOUNG Goalkeeper Saved
19:50	16 XIAOHUA Goalkeeper	21 : 36	-15	10 WON SEONPIL left-wing 6m SHOT GOAL
20:00	28 RU right-center 6m SHOT GOAL Assist: 4 JIAQIN	22 : 36	-14	16 PARK SAEYOUNG Goalkeeper
20:32				19 JUNGJIHAE right-center 6m SHOT Post
21:16	4 JIAQIN Blocked			10 WON SEONPIL BlockShot
21:30	4 JIAQIN Technical Fault			
21:58	16 XIAOHUA Goalkeeper Saved			14 PARK JUNHEE left-wing 6m SHOT
22:14	10 XIUXIU left-center 9m SHOT Post			
22:18				19 JUNGJIHAE Rebound
22:22				14 PARK JUNHEE right-wing 6m SHOT Post
22:23				22 SHIN EUNJOO Rebound
22:50	28 RU BlockShot			19 JUNGJIHAE Blocked
23:02	16 XIAOHUA Goalkeeper	22 : 37	-15	14 PARK JUNHEE left-center 6m SHOT GOAL
23:27	4 JIAQIN left-center 6m SHOT			16 PARK SAEYOUNG Goalkeeper Saved
23:57	10 XIUXIU left-center 6m SHOT GOAL	23 : 37	-14	16 PARK SAEYOUNG Goalkeeper
24:30	16 XIAOHUA Goalkeeper	23 : 38	-15	17 KIM JINYI left-center 9m SHOT GOAL
24:59	27 TING right-center 9m SHOT			16 PARK SAEYOUNG Goalkeeper Saved
25:02	33 MENGQING Steal			
25:45	33 MENGQING Blocked			19 JUNGJIHAE BlockShot
25:50	16 XIAOHUA Goalkeeper	23 : 39	-16	22 SHIN EUNJOO left-center 6m FastBreak GOAL
26:20	13 WEN right-wing 9m SHOT GOAL	24 : 39	-15	16 PARK SAEYOUNG Goalkeeper
27:01	29 JIAO BlockShot			19 JUNGJIHAE Blocked
27:08	11 YUANYUAN left-wing FastBreak			16 PARK SAEYOUNG Goalkeeper Saved
27:13	16 XIAOHUA Goalkeeper	24 : 40	-16	10 WON SEONPIL right-wing 6m SHOT GOAL Assist: 14 PARK JUNHEE
27:35	29 JIAO Technical Fault			
27:42	16 XIAOHUA Goalkeeper	24 : 41	-17	22 SHIN EUNJOO left-wing 6m FastBreak GOAL
27:58	10 XIUXIU right-center 9m SHOT			16 PARK SAEYOUNG Goalkeeper Saved
27:59				10 WON SEONPIL Rebound
28:20	16 XIAOHUA Goalkeeper	24 : 42	-18	14 PARK JUNHEE left-wing 6m SHOT GOAL

Match Time	CHINA	Score	Lead	KOREA
28:36	27 TING left-wing 6m SHOT			16 PARK SAEYOUNG Goalkeeper Saved
28:52	16 XIAOHUA Goalkeeper Saved			19 JUNGJIHAE right-wing 6m SHOT
29:09	33 MENGQING Blocked			10 WON SEONPIL BlockShot
29:13	16 XIAOHUA Goalkeeper	24 : 43	-19	2 SONG JIYOUNG left-center 6m FastBreak GOAL
29:48	27 TING left-center 9m SHOT			16 PARK SAEYOUNG Goalkeeper Saved
29:58				19 JUNGJIHAE Technical Fault