



# 19회 재단이사장배 전국교육대학선수권대회(생활체육 대학부) ]

**Match Team Statistics**

2018. 10. 13 13:00 SK 핸드볼 메인경기장

Referees :  
 Technical officer :  
 MVP : -

**부산교대 3 1 : 0 1 광주교대**  
 2 : 1

**부산교대**

Player		Shots								Offence			Deffence		RB	Punishments				Run
NO	Name	G/S	%	6m	Wing	9m	7m	FB	BT	AS	TF	BD	BS	ST		YC	2min	RC	DR	
1	김미지	0/0	0.0%																20:02	
5	고민경	0/1	0.0%			0/1													20:02	
7	이현정	0/0	0.0%																04:38	
10	방수연	0/0	0.0%																00:00	
11	김수연	0/0	0.0%																00:00	
14	하지혜	0/0	0.0%																00:00	
15	권수현	1/2	50.0%	0/1		1/1													15:24	
16	김나연	0/0	0.0%																00:00	
17	박도현	2/4	50.0%	0/1		0/1	1/1		1/1										20:02	
19	이은아	0/0	0.0%																01:26	
20	이윤서	0/0	0.0%																18:34	
24	김선아	0/0	0.0%																01:28	
25	김혜민	0/0	0.0%								1				1				20:02	
26	김예인	0/0	0.0%																00:00	
27	박설화	0/1	0.0%	0/1						1	2								18:36	
77	이은화	0/0	0.0%																00:00	
99	김수아	0/0	0.0%																00:00	
Totals		3/8	37.5%	0/3	0/0	1/3	1/1	0/0	1/1	1	3	0	0	0	0	1	0	0	0	140:14

GK		TOTAL SHOTS		6M		WING		9M		7M		FB		BT		RUN
NO	Name	S/S	%	S/S	%	S/S	%	S/S	%	S/S	%	S/S	%	S/S	%	M:S
1	김미지	6/7	85.7%	3/3	100.0%	0/0	0.0%	3/3	100.0%	0/0	0.0%	0/1	0.0%	0/0	0.0%	20:02
Totals		6/7	85.7%	3/3	100.0%	0/0	0.0%	3/3	100.0%	0/0	0.0%	0/1	0.0%	0/0	0.0%	20:02

Team Shots	Goals	Saves	Missed	Post	Blocked	Total	%
6m Shots	0	1	1	1	0	3	0.0%
Wing Shots	0	0	0	0	0	0	0.0%
9m Shots	1	2	0	0	0	3	33.3%
7m Shots	1	0	0	0	0	1	100.0%
Fast Breaks	0	0	0	0	0	0	0.0%
Breakthroughs	1	0	0	0	0	1	100.0%
Totals	3	3	1	1	0	8	37.5%



**19회 재단이사장배 전국교육대학선수권대회(생활체육 대학부) ]**

**Shot Distribution**

2018. 10. 13 13:00 SK 핸드볼 메인경기장

Referees :  
 Technical officer :  
 MVP : -

**부산교대 3 1 : 0 1 광주교대**

**부산교대**

Players

Goals / Shots

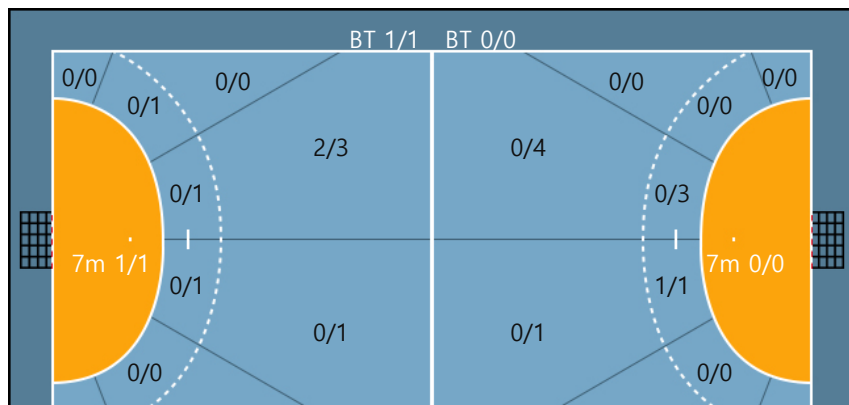
<b>1. 김미지</b> 0/0 0/0 0/0 0/0 0/0 0/0 0/0 0/0 0/0	<b>5. 고민경</b> 0/0 0/0 0/0 0/0 0/1 0/0 0/0 0/0 0/0	<b>7. 이현정</b> 0/0 0/0 0/0 0/0 0/0 0/0 0/0 0/0 0/0	<b>10. 방수연</b> 0/0 0/0 0/0 0/0 0/0 0/0 0/0 0/0 0/0	<b>11. 김수연</b> 0/0 0/0 0/0 0/0 0/0 0/0 0/0 0/0 0/0
<b>14. 하지혜</b> 0/0 0/0 0/0 0/0 0/0 0/0 0/0 0/0 0/0	<b>15. 권수현</b> 1/1 0/0 0/0 0/0 0/1 0/0 0/0 0/0 0/0	<b>16. 김나연</b> 0/0 0/0 0/0 0/0 0/0 0/0 0/0 0/0 0/0	<b>17. 박도현</b> 0/0 0/0 0/0 0/1 0/0 1/1 1/1 0/0 0/0	<b>19. 이은아</b> 0/0 0/0 0/0 0/0 0/0 0/0 0/0 0/0 0/0
<b>20. 이윤서</b> 0/0 0/0 0/0 0/0 0/0 0/0 0/0 0/0 0/0	<b>24. 김선아</b> 0/0 0/0 0/0 0/0 0/0 0/0 0/0 0/0 0/0	<b>25. 김혜민</b> 0/0 0/0 0/0 0/0 0/0 0/0 0/0 0/0 0/0	<b>26. 김예인</b> 0/0 0/0 0/0 0/0 0/0 0/0 0/0 0/0 0/0	<b>27. 박설화</b> 0/0 0/0 0/0 0/0 0/0 0/0 0/0 0/0 0/0
<b>77. 이은화</b> 0/0 0/0 0/0 0/0 0/0 0/0 0/0 0/0 0/0	<b>99. 김수아</b> 0/0 0/0 0/0 0/0 0/0 0/0 0/0 0/0 0/0	Post: 1		
Missed: 1				

Team  
Goals / Shots

Team	Goals	Shots	Missed
1	1/1	0/0	0/0
2	0/1	0/2	1/1
3	1/1	0/0	0/0

Missed: 1 Post: 1  
 Blocked: 0

**Offense**



**Defense**

Goalkeepers  
Goals / Shots

Goalkeeper	Goals	Shots	Missed
1. 김미지	1/3	0/0	0/0
2.	0/0	0/1	0/1
3.	0/1	0/0	0/1



2Min	2 Minute Suspensions	AS	Assists	BS	Block Shots	BT	Breakthroughs	RB	Rebound
DR	Disqualification with report	RC	Red cards	FB	Fast Breaks	G/S	Goals/Shots	BD	Blocked
S/S	Saves/Shots	YC	Yellow cards	ST	Steals	TF	Technical Faults	%	Efficiency



Match Time	부산교대	Score	Lead	광주교대
07:54				14 정다운 Foul
08:31	17 박도현 7M GOAL Assist 27 박설화	1 : 0	1	16 안경민 Goalkeeper
09:00	25 김혜민 Foul			
09:14	1 김미지 Goalkeeper Saved			79 정숨이 left-center 9M SHOT
09:45				79 정숨이 Foul
10:02	5 고민경 left-center 9M SHOT			16 안경민 Goalkeeper Saved

## 2nd Half

Match Time	부산교대	Score	Lead	광주교대
00:00	Game Start			
00:12	17 박도현 right-center 9M BreakThrough GOAL	2 : 0	2	16 안경민 Goalkeeper
03:42	1 김미지 Goalkeeper	2 : 1	1	9 성유진 right-center 6M FastBreak GOAL
04:18	25 김혜민 Yellow Card			
04:47				14 정다운 Line cross
05:34				9 성유진 2Min(foul)
05:54				79 정숨이 Steal
06:01				4 김아연 Catch miss
07:01	1 김미지 Goalkeeper Saved			4 김아연 left-center 6M SHOT
07:16	15 권수현 right-center 9M GOAL	3 : 1	2	16 안경민 Goalkeeper
07:35				9 성유진 2Min Finished
07:41				Time out
08:18	27 박설화 Catch miss			
08:25	1 김미지 Goalkeeper Saved			79 정숨이 left-center 9M SHOT
09:10				9 성유진 right-center 9M SHOT Missed